



Western PA
Federal Credit Union
est.1972

NEWSLETTER

2300 FREEPORT RD SUITE #15
NEW KENSINGTON, PA 15068
724-339-0635
WWW.WESTERNPAFCU.ORG



Spring into Savings!

Refinance Special

Up to **4.00%** Off Your
APR*

Current Auto Loan!



*APR = Annual Percentage Rate. Offer applies to refinancing an auto loan from another financial institution. Current Western PA FCU loans are not eligible. Floor rate for this promotion is 3.99% Annual Percentage Rate (APR). Subject to credit approval and conditions. Western PA FCU will match remaining term. Minimum loan amount of \$3,000. Proof of current rate from your financial institution is required. Membership eligibility required. Title fee may apply. Requested loan amount cannot exceed the present value of the vehicle as determined by JD Powers. Offer is subject to change without notice. Additional discounts do not apply for special.



**Offer Ends
May 1st!**

**Transfer Your Credit Card
Balance to Your Western PA
Credit Card and Receive
1.99%APR for 12 Months!**

*After 12 months your rate will go back to 12.75%
Purchases not included in the 1.99% promo.

Annual Meeting Reminder

Our Annual Meeting will be held April 21st, 2026 in our New Kensington Office at 11am. Please RSVP by April 15th, 2026.



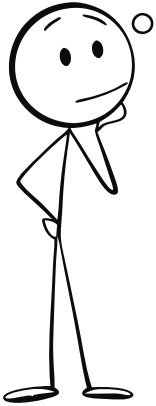
Grow with Us!!

Your savings federally insured to at least \$250,000
and backed by the full faith and credit of the United States Government

NCUA

National Credit Union Administration, a U.S. Government Agency

Did You Know?



Earth Day is
April 22nd

**SAVE A TREE,
SIGN UP FOR
E-STATEMENTS**

Download
our app!



Holiday Closings

We will be closed on the following holidays:

Memorial Day
Juneteenth Day
Independence Day (observed), July 3rd
Labor Day
Columbus/ Indigenous Peoples' Day
Veterans Day
Thanksgiving Day
Black Friday
Christmas Eve
Christmas Day
New Year's Eve

Modified Hours:

Good Friday, April 3rd – Open 9:00 a.m. – 12:00 p.m.

Please join us in welcoming three new employer groups Greater Latrobe Schools, Harbinger Wireline Services, and Butch's Sound & Vision to our credit union!

We look forward to serving their employees and helping them achieve their financial goals through the trusted products and personalized service our members rely on every day.

Evergreen Advantage Program



We believe loyalty should be rewarded. With our Evergreen Advantage Program, you can lower your loan rate just by using the services you already enjoy.

For each of the following, receive a .25% rate discount (up to 1.00% total):

- E-Statements
- Full Direct Deposit from your employer
- Checking Account
- Western PA Visa Credit Card



That means more savings over the life of your loan- helping you achieve your goals faster. See today's rates on our website at www.westernpafcu.org.

* This does not apply to Home Equity loans, Visa Credit Cards, or Loan Specials.